

Integrated mineralogical datasets for geoscience

Robertson have provided specialist mineralogy services since our foundation in 1961. We provide expert services for conventional and unconventional hydrocarbon plays, mining, geothermal, carbon capture and storage, and environmental assessments. We deliver high quality mineralogical data as a standalone dataset or as part of a fully integrated multidisciplinary geoscience project.

QEMSCAN® technology

We use **QEMSCAN** (Quantitative Evaluation of Minerals by Scanning Electron Microscopy) to provide quantitative mineralogical and textural datasets. This rapid and reliable analytical method can be used on most sample types including drill cuttings, mine tailings, core plugs, slabbed core, soils, river sediments, metallurgical testing, and more.

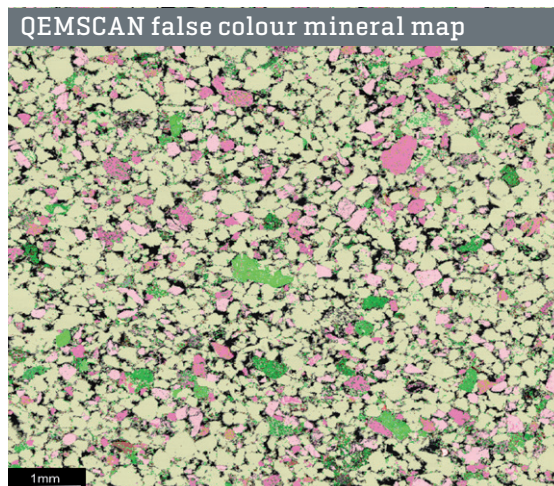
Data outputs

Our dedicated team of specialists use **QEMSCAN** to obtain the maximum amount of information from your samples, including:

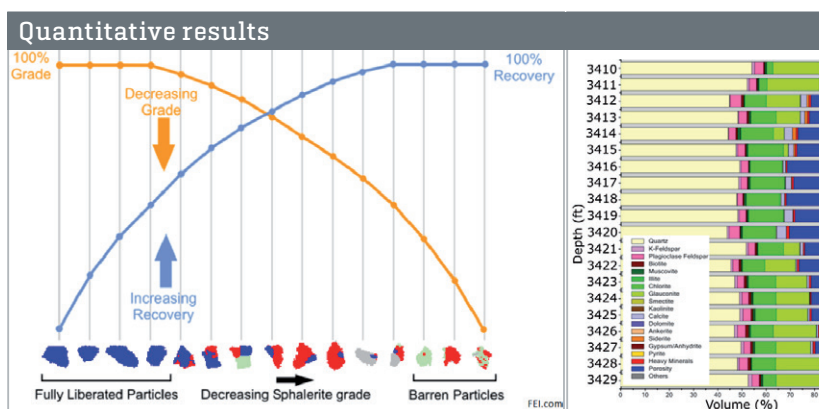
- Selection of scan types: Field Image, BMA, PMA, SMS, TMS
- Porosity, pore size distribution and anisotropy
- Grain size distribution and angularity
- Particle Size Analysis and Liberation
- Quantitative mineral identification
- Quantitative lithotyping
- Elemental deportment
- Mineral association
- Elemental assay

Applications

- Reservoir quality, provenance, correlation
- Ore characterization, grade and recovery
- Acid mine drainage, land contamination
- Ground-truthing geological models



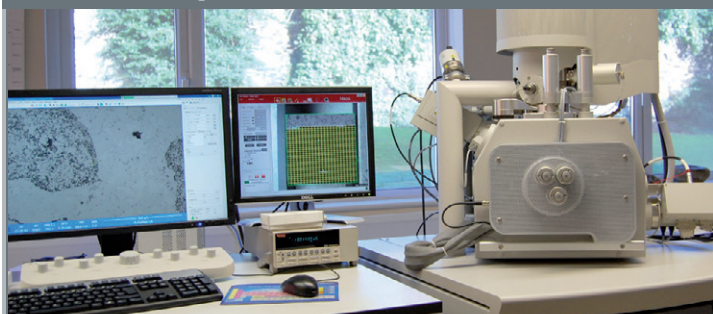
Detailed mineralogical and textural information.



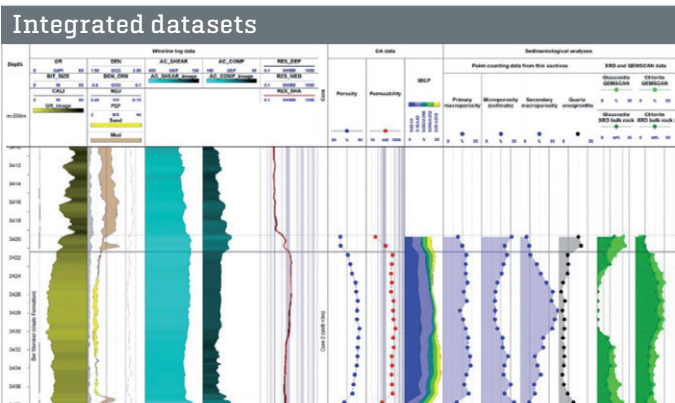
Mining grade & recovery.

Reservoir bulk mineralogy.

Precision analysis



QEMSCAN and SEM.



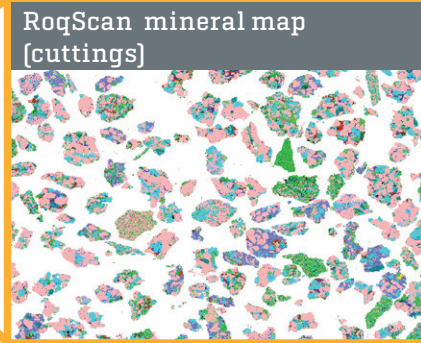
Integrated mineralogy, petrophysics and CCA data.

Mineralogy Services

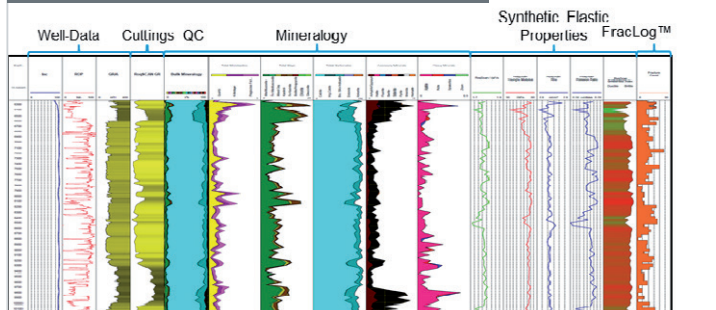
RoqScan™ real-time mineralogy analysis on location

Our exclusive portable system **RoqScan** provides fast, quantitative mineralogical datasets at the wellsite or core store. Detailed mineralogical and textural data can be achieved within as little as one hour of ditch cuttings arriving at the wellsite.

RoqScan data can assist real-time decision making on challenges such as improved well management, improved lateral drilling, tactical positioning of fractures and validation of petrophysical interpretations.

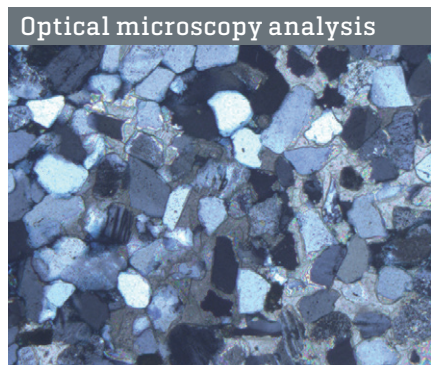
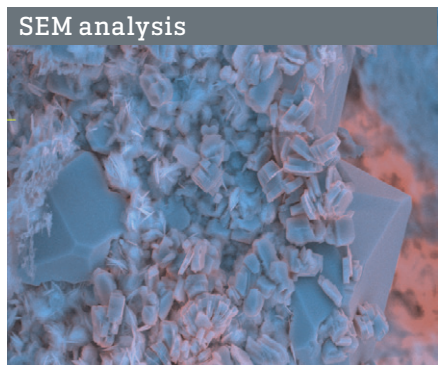


RoqScan Petro-Elastic Modelling



Scanning Electron Microscopy & Optical Microscopy

We provide detailed SEM and petrographic analysis to understand the texture and diagenetic history of your samples. These methods are invaluable for assessing hydrocarbon reservoir quality, as well as for assessing micro-fracture structure for unconventional, carbon capture, and geothermal exploration.



Our services

- **QEMSCAN**
- **RoqScan** on location
- Scanning Electron Microscopy
- Optical microscopy
- Sample preparation
- XRD & XRF

We offer a full petrographic service, from sample preparation (thin sections, core samples, polished blocks) at our laboratory, to delivery of quality datasets and reports. Results can be delivered as a standalone dataset or as part of a fully integrated mineralogy or multidisciplinary project.

The technology

QEMSCAN and **RoqScan** combine a scanning electron microscope (SEM) and powerful energy dispersive X-ray spectroscopy (EDS) detectors, integrated with an intuitive software suite and our proprietary mineralogical database. Images and X-rays are collected and processed, and quantitative mineralogical volumes and false colour mineral maps are generated.

Local Contact

Robertson - robertson.info@cgg.com - Tel: +44 1492 581811